

# Wuhan Guide Infrared Co., Ltd



Guide Infrared, Infrared Guide

*Guide*<sup>®</sup>

# MobIR<sup>®</sup> M8

MobIR<sup>®</sup> is a mobile like infrared camera. The MobIR<sup>®</sup> M8, representing a landmark of IR technology progress globally, is the latest innovation from Guide infrared who always works with innovative emotion. Guide presents M8 enriching the features exclusively for high-end IR camera before.



# M8 Application



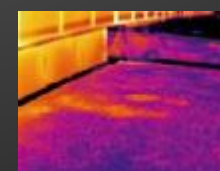
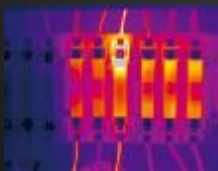
Predictive and Preventative  
Maintenance

Veterinarian Helper

Portable Law Enforcement

Electricity Inspections

Building Diagnostics



# M8 Outline Rugged Design

ØMagnalium housing and built-in lens

ØUnique holding and easy operation

ØGuide's classical mobile like shape and unique bar phone



# M8 Unique Features

Auto Capture

IR Fusion Technology

Auto Gate Technology

Live Thermal Video Recording

Auto Focus for Both IR  
and Visual Image

2.0 Megapixel CMOS visual image

2.47" Touch Screen &  
Angle Adjustable

4 Hours Super Long Working Time

5 Modes of Operation



# Auto Capture



Ø Image will be auto captured in interval setting time

Ø Optional time including 15sec, 30sec, 60sec, and 5min

Ø Camera can be mounted on tripod for real time monitoring purpose

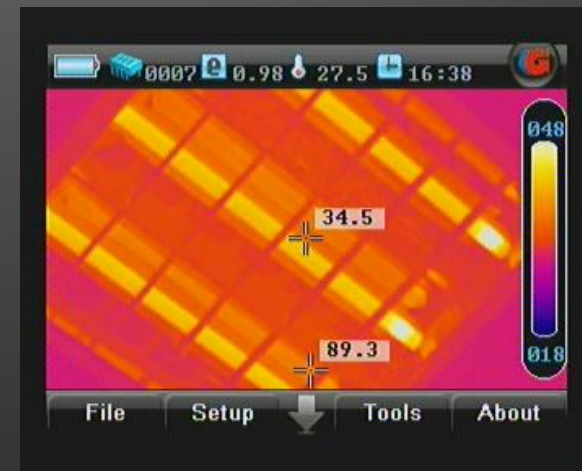
# Auto Gate Technology

- ∅ Closing automatically in sleep or off mode
- ∅ The auto gate works as both shutter and intelligent lens cap
- ∅ Providing double protection to the sensitive optics and detector



# Auto Focus Function

- Ø Auto focus by simply pressing one button
- Ø Auto focus for both thermal and visual image
- Ø Unprecedentedly adopted in Infrared Camera of 160×120 Pixels





# Angle Adjustable LCD

Ø Holding in many different ways by adjusting LCD

Ø Reaching some harsh corner while the thermal abnormality finds nowhere to hide



# Touch Screen



Ø Delivering more advanced and complicated analyses that buttons can never do

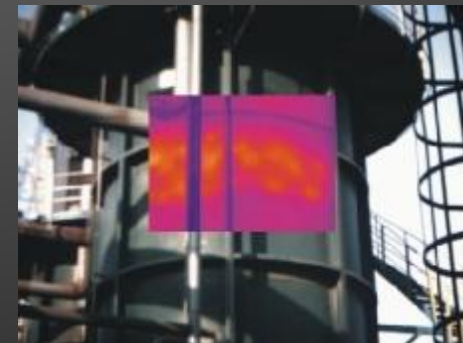
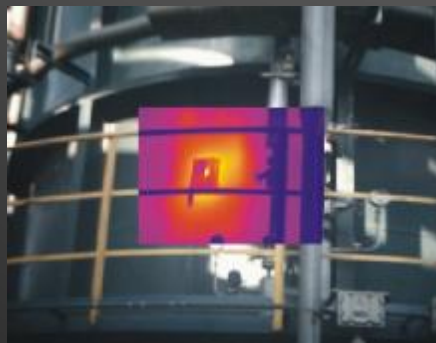
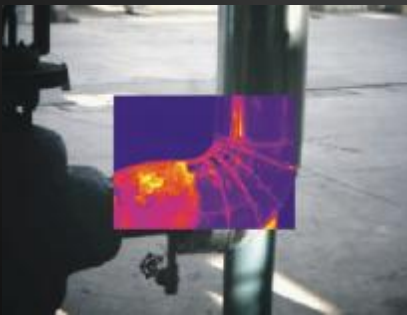
Ø Drawing out any irregular outline that the thermal target covers

Ø Assisting you get the most uniform and accurate measurement



# IR Fusion Technology

- Ø Overlaying the thermal image directly on the corresponding visual image
- Ø Helping you identify where the problem exactly is and give the solutions

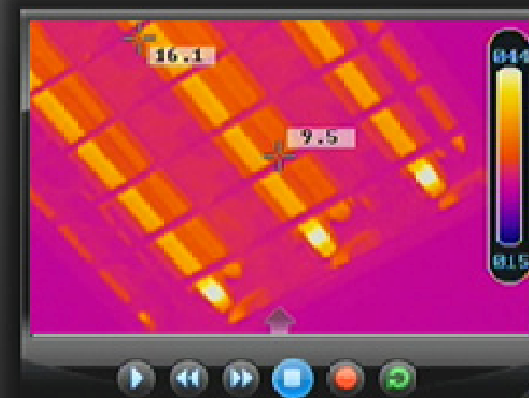
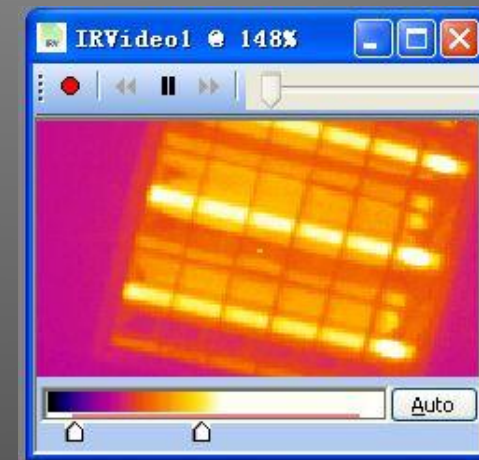


# Live Thermal Video Recording

Ø Live thermal video recording could be on the board or PC.

Ø Real time control and data transfer by connecting to PC via USB2.0

Ø Recording time depending on Mini SD card or PC hard disk capacity



# 2.0 Megapixel CMOS

- Ø Integrating high-resolution CMOS delivers extremely crisp visual image
- Ø Assistance of clearer and better fusion image and spotting potential problem exactly





# Super Long Working Time

Ø Large battery capacity and low power consumption

Ø Continuously working 4 hours ensures uninterrupted high efficient work

Ø No worry about the inconvenience caused by low power any more



# 5 Modes of Operation

- } Button
- } Touch screen
- } W/T wheel
- } USB2.0
- } Remote controller



Choose whichever type you like

# Portable Carry Easily Hold

Ø The palm-sized camera body could be easily put in the pocket

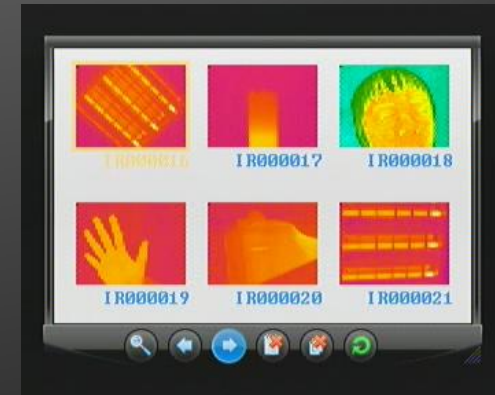
Ø Designed according to ergonomics for more comfortable operation



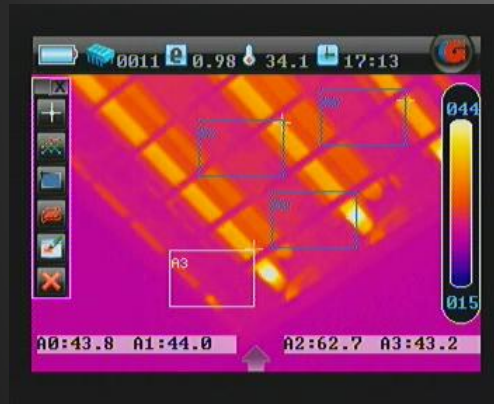
*Guide*<sup>®</sup>

# Imaging Performance

- Ø Zoom in or out thermal image ×2
- Ø 50Hz PAL/60Hz NTSC Image Frequency
- Ø Output both thermal and visual to external display



# Temperature Measurement



Ø Auto hot-spot tracing and center-cursor temperature display

Ø 4 spots and 4 areas analysis in live, frozen, saved images



Ø Line analysis, Histogram analysis and Isotherm analysis also could be done



# Image & Video Storage

Ø Up to 60 seconds digital clip of voice can be recorded and saved for each image

Ø Images saved as standard JPG format in the built-in flash or Mini SD card

Ø Videos saved as IRV format in the Mini SD Card or PC hard disk



# Analysis Software

Ø The free software Guide IrAnalyzer<sup>®</sup> will help you do more details analysis

Ø Automatic report generation in either Microsoft Excel or Word

Ø The multi-language allows to choose the most familiar language



The screenshot displays the Guide IrAnalyzer software interface. The top part shows a thermal image of a beer tap with a temperature scale. Below the image is an "Inspection Report" section. The report includes an "Information:" table with the following data:

Information:	
Platform	IRAC02-00
Creation time	12/16/2008 5:42:00 PM
Transitivity	0.96
Background Temp.	32.5°C
Distance	1.0m
Max Temp.	64.8°C
Min Temp.	41.8°C
Voice Comment	

Below the information table is an "Analyses Table:" section with a single row:

Analyses Table:	
Element description	Value

# Basic Technical Specifications

Spectral Range	8-14 $\mu$ m
Field of View	20.6° ×15.5°
Thermal Sensitivity	≤80mk at 30°C
Detector Type	UFPA Detector (160*120 pixels 25 $\mu$ m)
Operating Temperature	-10 °C to 60 °C
Storage Temperature	-20 °C to 60 °C
Measurement Temperature	-20 °C to 250 °C (350 °C optional)

# M8 Performance

Whatever you expect from a thermographic camera, M8 satisfies you by its compactness, ruggedization, accuracy, efficiency, reliability and affordability.

Using MobIR<sup>®</sup> M8, easing your work!

# Company Information

Wuhan Guide Infrared Co., Ltd

Address: No.26 Shucheng Road, Wuhan 430070, China

Tel: +86-27-87691925 +86-27-87691983

Fax: +86-27-87691927

Website: [www.guide-infrared.com](http://www.guide-infrared.com)

Email: [overseas@guide-infrared.com](mailto:overseas@guide-infrared.com)

*Guide*<sup>®</sup>